



832.347.2200 • trinitysignature.com

LET US BUILD YOUR SIGNATURE HOME

MONTICELLO
4,018 Sq. Ft.

- 4 bedroom – 3.5 bath – 5 car garage
- Five car tandem garage
- Huge walk-in closet in master
- Covered front porch and back patio

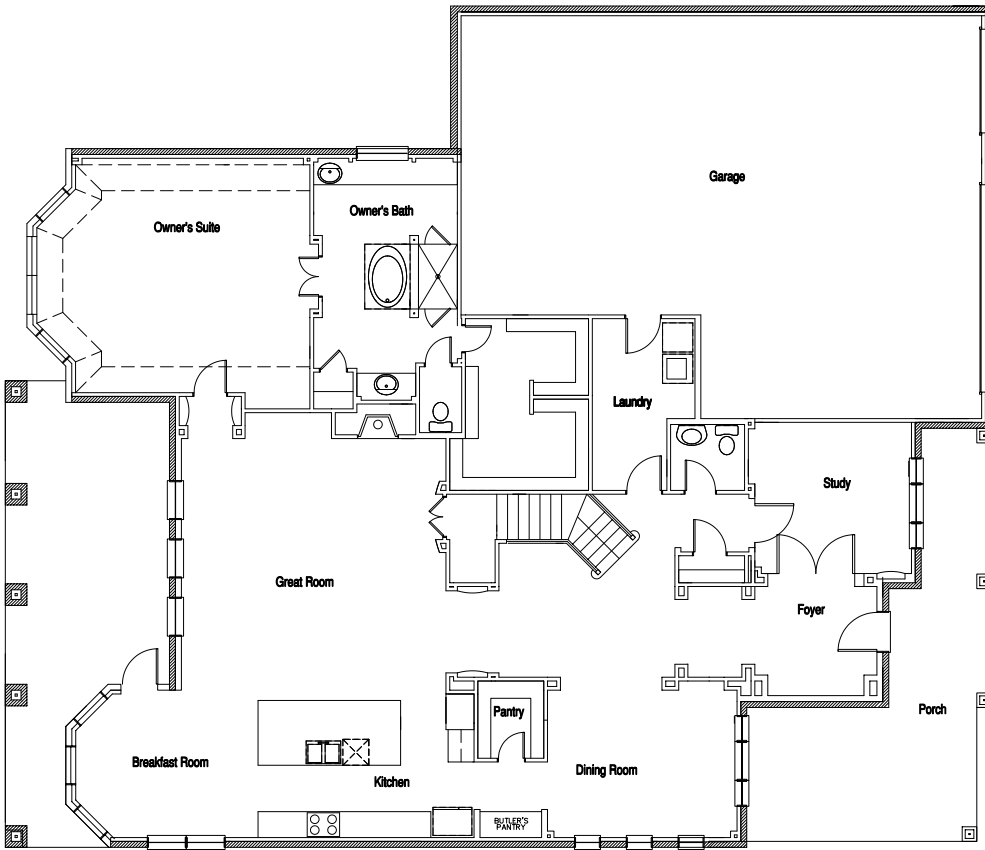


Plan shown is an artist concept. Measurements, details and features are approximate and are subject to change without notice.

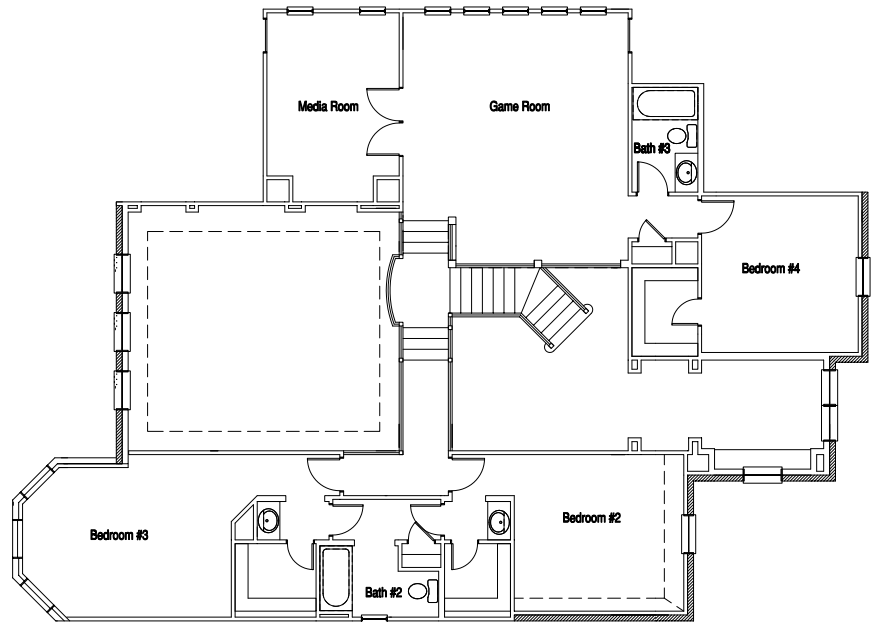


MONTICELLO

4,018 Sq. Ft. • 4-3.5-5



First Floor



Second Floor

Plan shown is an artist concept. Measurements, details and features are approximate and are subject to change without notice.

